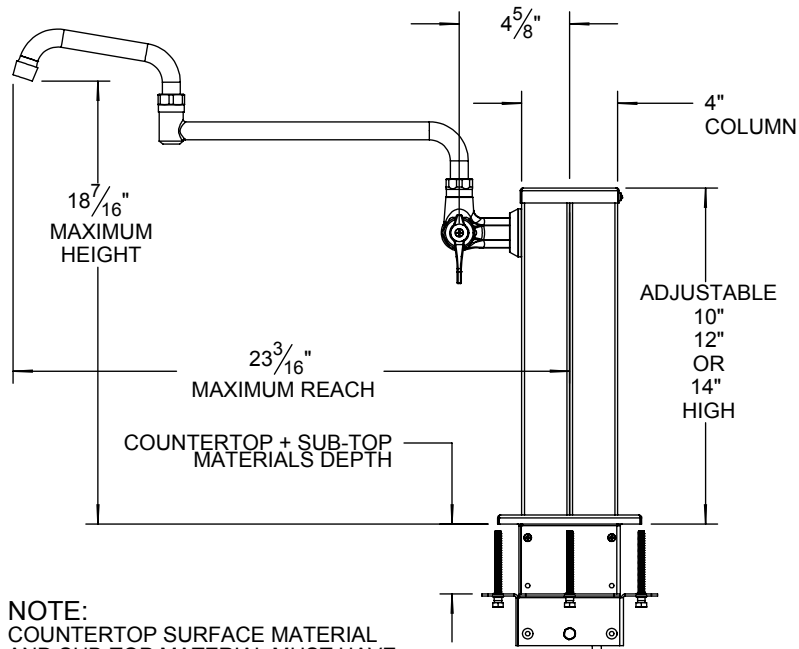
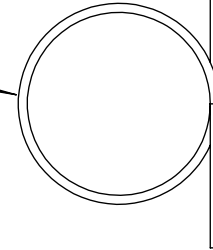


**AGVPC-T10 TYPICAL INSTALLATION**

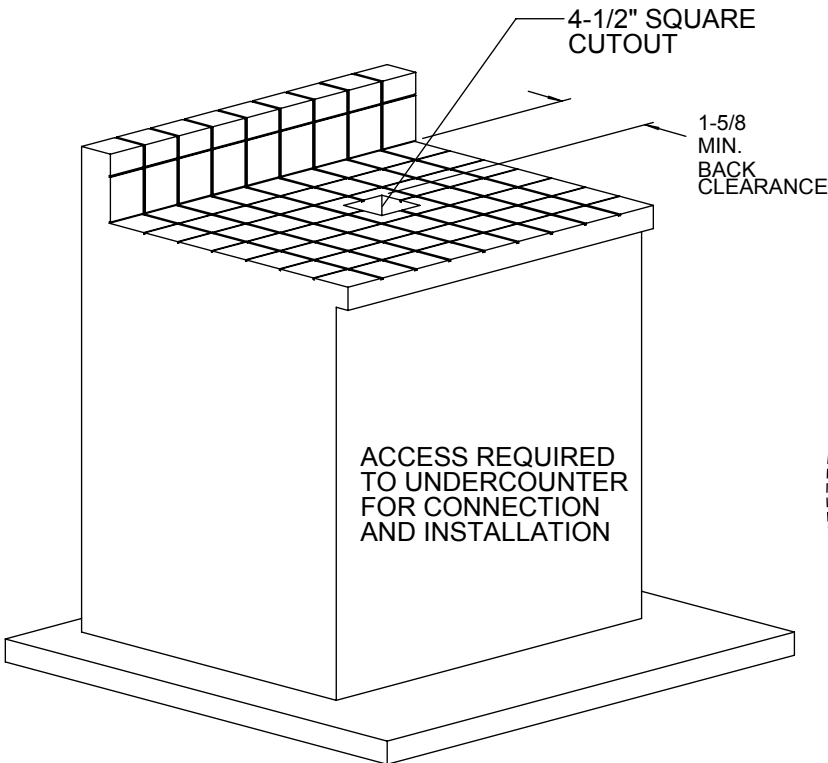


**NOTE:**  
 COUNTERTOP SURFACE MATERIAL  
 AND SUB-TOP MATERIAL MUST HAVE  
 A MINIMUM OF 1/2" AND A MAXIMUM  
 OF 2-7/8" TOTAL THICKNESS.

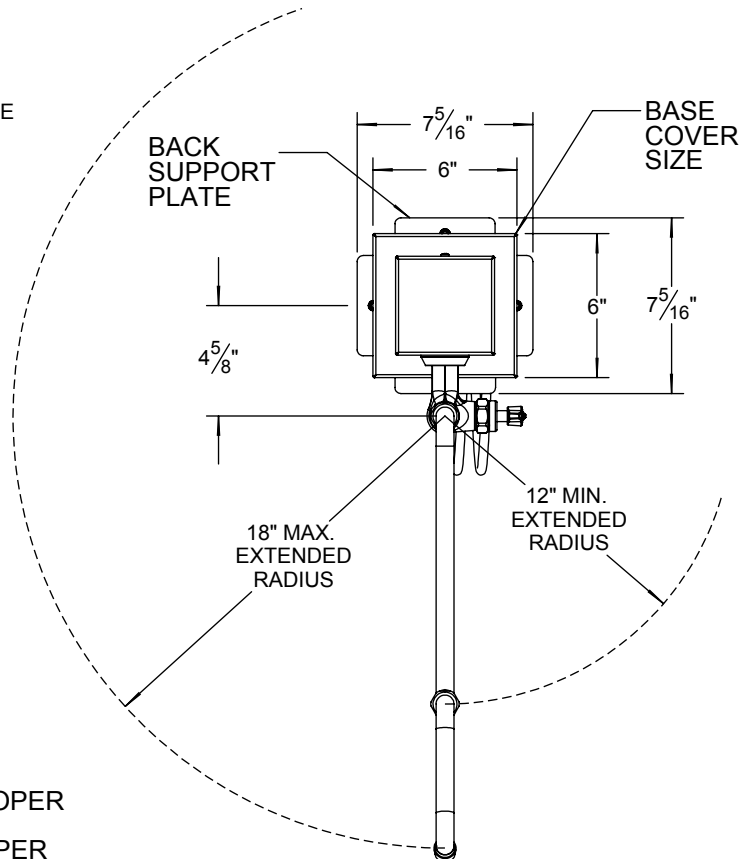
72" OF 3/8" Ø SOFT  
 DRAWN COPPER  
 SUPPLIED WITH UNIT



**COUNTERTOP CUTOUT REQUIREMENTS**



ACCESS REQUIRED  
 TO UNDERCOUNTER  
 FOR CONNECTION  
 AND INSTALLATION



**NOTE:**  
 THE AGVPC-T10 POT FILLER TOWER REQUIRES A WATER LINE  
 THAT MUST BE SUPPLIED UNDER THE COUNTERTOP FOR PROPER  
 OPERATION.  
 THE UNIT IS SUPPLIED WITH 6 FT OF 3/8" Ø SOFT DRAWN COPPER  
 FOR CONNECTION TO A FAUCET COMPRESSION VALVE BY CUSTOMER.